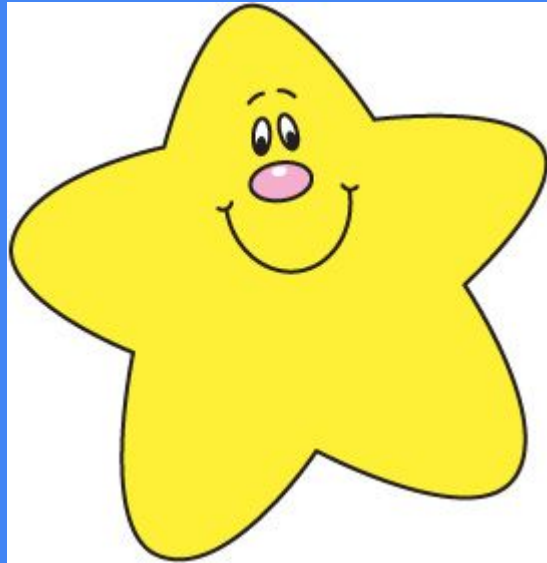


**Welcome  
Hunter GT/AIG Magnet  
Elementary Kindergarten  
Families!**



**The Kindergarten Team  
2019-20**

# K Team

Find out more about us on the Hunter Website:  
[Kindergarten Staff](#)



**Mrs. Tanceusz**  
[atanceusz@wcpss.net](mailto:atanceusz@wcpss.net)



**Mrs. Newkirk**  
[knewkirk@wcpss.net](mailto:knewkirk@wcpss.net)



**Mrs. Martinez**  
[kmartinez2@wcpss.net](mailto:kmartinez2@wcpss.net)



**Mrs. Duke**  
[jduke@wcpss.net](mailto:jduke@wcpss.net)



**Miss Feller**  
[krmckinney@wcpss.net](mailto:krmckinney@wcpss.net)



**Mrs. Mendenhall**  
[kmendedhall@wcpss.net](mailto:kmendedhall@wcpss.net)

# Expectations

- PBIS (Positive Behavior Intervention & Support)
- Effort Checklist - Students self-evaluate their efforts. Am I doing my best?
- Growth Mindset - To promote a positive growth mindset we praise effort! How?  
We teach:  
Try our best! The Power of YET!  
F.A.I.L. (First Attempt in Learning).  
We also promote goal setting.

# Literacy

Reading, Writing, Speaking & Listening, Language

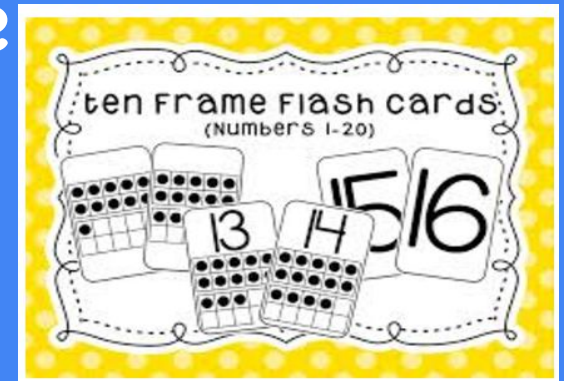
- Literacy Block
  - Daily 5 structure
  - CAFÉ Strategies for Comprehension, Accuracy, Fluency, and Expand Vocabulary ([The Daily CAFE](#))
- Writing
  - Writers Workshop model ([Lucy Calkins](#))
- We differentiate instruction to meet the needs of EACH learner. ([Differentiate](#))
- We utilize the [Letterland](#) curriculum to teach phonics and foundational skills.



# Math

- M.A.T.H. Groups
- Math Talk (Math Talk)
- Math Homework
- Dreambox Learning is math tool students are using to practice skills we learn.  
Encourage independence  
- Try again!

K Math at a Glance



# Science & Social Studies

## Science Units:

- Forces & Motion  
(positions/ movement)
- Matter, Properties &  
Change  
(classify/compare)
- Earth Systems  
Structures & Processes  
(weather)
- Structures & Functions  
of Living Organisms  
(animals)

## SS Units:



- Civics & Government  
(citizenship)
- Geography &  
Environmental  
Science (maps)
- Economics (new,  
coming soon)
- History/Culture  
(new, coming soon)

# Updates & News

- MemberHub -PTA information
- Hunter GT/AIG Magnet Elementary [Facebook Page](#)
- Hunter Elementary [PTA Facebook Page](#)
- Twitter @HunterPrincipal, @hunter\_pta
- Class Website Links
- [Mrs. Duke](#), [Mrs. Martinez](#) [Mrs. Tanceusz](#)  
[Mrs. Newkirk](#)
- Newsletters (monthly)
- Monday Memos
- Seesaw Portfolio!

# Additional Items:

- Monday Folders
- Homework - READ for 20 minutes nightly!  
Optional Enrichment HW can be found [HERE](#).  
Homework does not need to be turned in.
- Transportation Changes
- Volunteers
- Field Trips
- BYOD - You can read about it [HERE](#).
- Electives vs. Specials
- School Meals - Breakfast \$1.25, Lunch \$2.75 Visit:  
<http://www.wcpss.net/Page/1848>
- Here Comes the Bus APP  
<http://www.wcpss.net/herecomesthebus>
- Student Led Conferences
- Birthday Celebrations

WHY READ 20 MINUTES AT HOME?		
Student A Reads	Student B Reads	Student C Reads
20 minutes per day	5 minutes per day	1 minute per day
3,600 minutes per school year	900 minutes per school year	180 minutes per school year
1,800,000 words per year	282,000 words per year	6,000 words per year
		
☺ Scores in the 90 <sup>th</sup> percentile on standardized tests.	☹ Scores in the 50 <sup>th</sup> percentile on standardized tests.	☹ Scores in the 10 <sup>th</sup> percentile on standardized tests.
If they start reading for 20 minutes per night in Kindergarten, by the end of 6 <sup>th</sup> grade, Student A will have read for the equivalent of 60 school days, Student B will have read for 12 school days, and Student C will have read for 3.		
WANT TO BE A BETTER READER? SIMPLY READ.		



# K Daily Schedule:

## Quarter 1

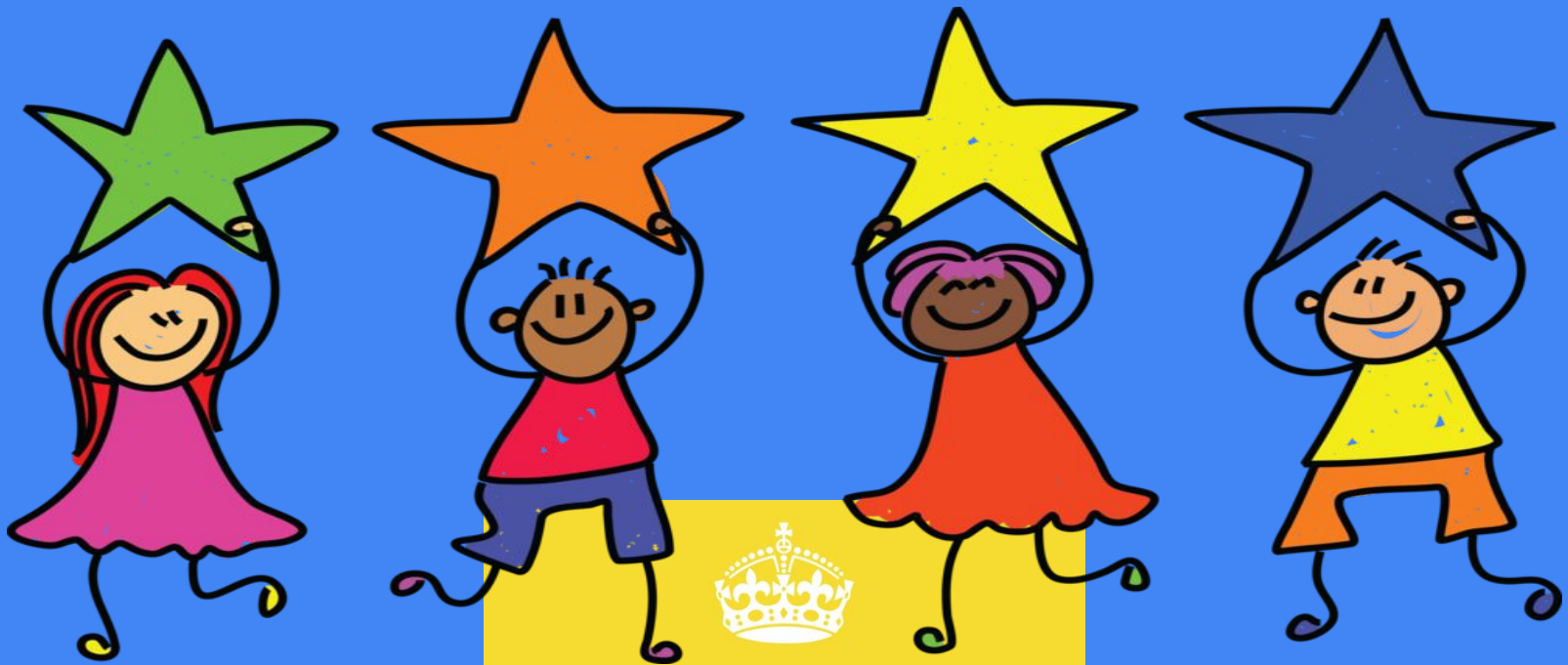
8:45-9:15 Arrival Routines  
9:15-10:30 Literacy  
10:30-11:00 LUNCH  
11:00-11:40 Letterland  
11:40-12:20 SPECIALS  
12:25-1:45 Math  
1:45-2:15 Quiet Time  
2:15-3:00 RECESS & Snack  
3:00-3:35  
Writing/Science/SS  
3:35-3:45 Dismissal

## Quarter 2

8:45-9:15 Arrival Routines  
9:15-10:30 Literacy  
10:30-11:00 LUNCH  
11:00-11:40 Letterland  
11:40-12:20 SPECIALS  
12:20-12:55 Math Lesson  
12:55-1:35 ELECTIVE  
1:35-2:30 Math Groups  
2:30-3:00 RECESS & Snack  
3:00-3:35  
Writing/Science/SS  
3:35-3:45 Dismissal

## Quarter 3 & 4

8:45-9:15 Arrival Routines  
9:15-10:30 Literacy  
10:30-11:00 LUNCH  
11:00-11:40 Letterland  
11:40-12:20 ELECTIVE  
12:20-12:55 Math Lesson  
12:55-1:35 ELECTIVE  
1:35-2:30 Math Groups  
2:30-3:00 RECESS & Snack  
3:00-3:35  
Writing/Science/SS  
3:35-3:45 Dismissal



KEEP  
CALM  
AND  
Have a GREAT  
School Year